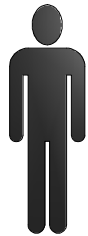


M31

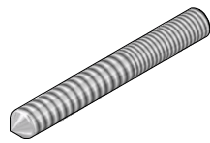
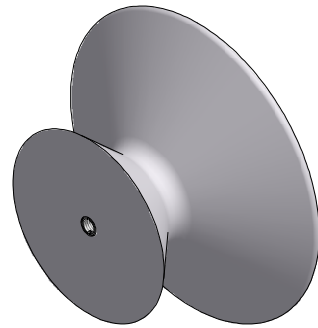


Ved ophængning skal De selv sikre Dem væggenes beskaffenhed og dermed hvilke fittings De skal bruge til fastgørelse.

Before wall mounting of the part, you have to make sure of the character of the wall and which fittings to use for fastening.

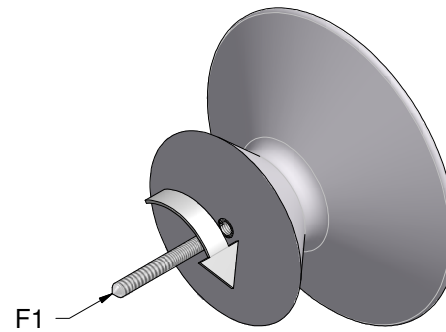
Vor aufhängen der Elemente müssen Sie selbst die Beschaffenheit der Wand sichern.

En suspension de l'étagère, vous êtes responsable de la qualité du mur.



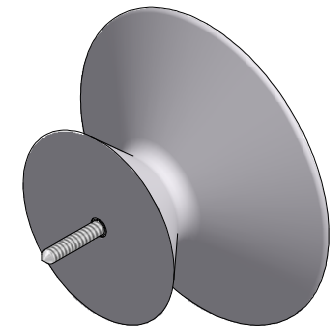
F1
(3012459)

1

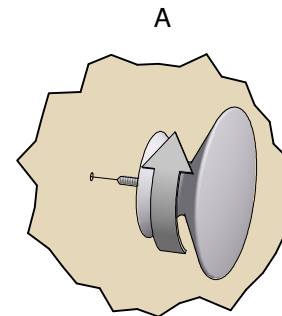
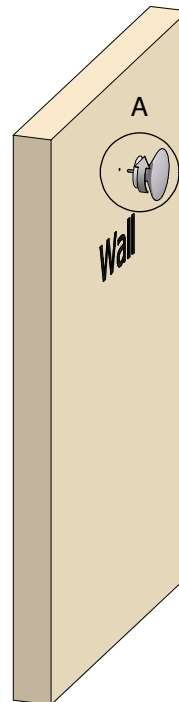


2

31044-E2-P1 /1



3



4

